

hydratight®

JDMS – JOINT DATA MANAGEMENT SYSTEM



Who We Are

One Company, Total Support, Complete Solutions

Over many years Hydratight has provided world-class bolted joint solutions and continues to set international standards in joint integrity for its customers on a global scale. By supplying a comprehensive range of products and services supported by a strong, experienced engineering team, we apply global standards through our network of local operations.

Hydratight works in partnership with the world's leading Original Equipment Manufacturers (OEMs). Using the latest computer technology and market leading development facilities, we continue to push back the boundaries of technology to provide fast, accurate and reliable solutions to critical repair problems.

One Company - Meets Standards

Totally committed to safety and quality, all Hydratight products and services are designed, manufactured and carried out within a management system in accordance with ISO 9001: 2008 (Quality Management), ISO 14001: 2004 (Environmental Management) and OHSAS 18001:2007 (Occupational Health and Safety).

One Company

Our extensive engineering services include:

- Torque and tension bolting equipment
- Machining equipment
- Product sales, rental and technical support
- Product service and training

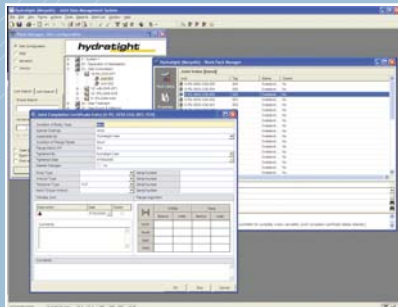


Joint Data Management System

Managing safety and reliability

Hydratights' JDMS (Joint Data Management System) is a dedicated software tool for the management of information critical to the safety and reliability of bolted joints in the process and other industries.

It allows data on tolerances, torque levels, maintenance history, documentation and more to be logged and retrieved through one quick, easy on-screen interface.

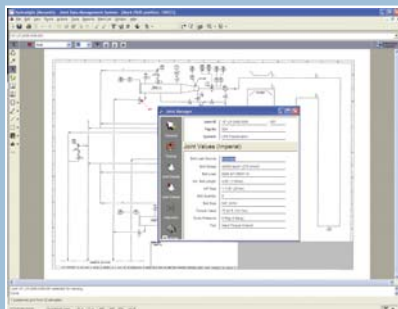


The result is an end to guesswork and uncertainty during construction or maintenance and enhanced levels of reliability and safety, even in non-standard joints.

Meeting Industry Expectations and More

When legislation and industry best-practice is driving the need for safer systems and processes, JDMS allows managers and technicians to make decisions with absolute confidence.

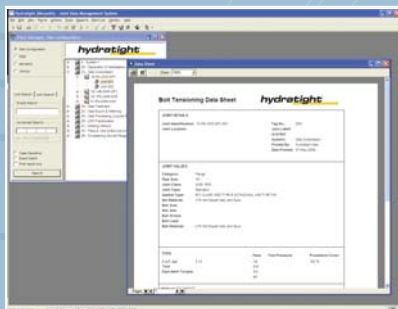
Over time, the system will log data for the entire lifecycle of every critical bolted joint on an installation, building up a library of essential information to aid planning, ensure joint integrity and reduce overall costs.



Just as importantly, it will provide a fully traceable record for each individual piece of work, contributing to certification and compliant working practices. It will also supply a full audit trail to help in the management of technician and sub contractor competence.

The Customized Management Tool

JDMS can be automatically linked to your existing project piping specifications and its core functionality customized to suit your operational needs and specific working practices.



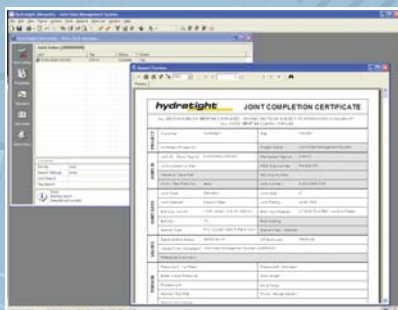
For best results, the system should be implemented at the very start of a project's design. However, it can be adopted at any time during the life of an asset, providing a powerful data management solution to improve efficiency and reduce project costs through design, installation, management and eventual decommissioning.

Features

- Scalable from 100 joints to 100,000
- Embedded asset / piping specifications
- Single asset / multi asset options
- Thin-client, client-server or ASP model
- Drawing document integration
- Open interface for integration
- Integral bolt load calculation intelligence
- Highly configurable
- Data import and export
- Inspection, exception and failure reports
- Flexible reporting structure

Modules

- Intelligent drawing module
- 'Informate' calculation technology
- Document management
- Mobility tools for barcode and RFID Report Manager
- Application integration module



hydratight®

Global Standards Local Delivery

Our global network means you can rely on the right people, products and services wherever you are in the world.

Email us at: solutions@hydratight.com

Or find your local representative at:

hydratight.com/contact

