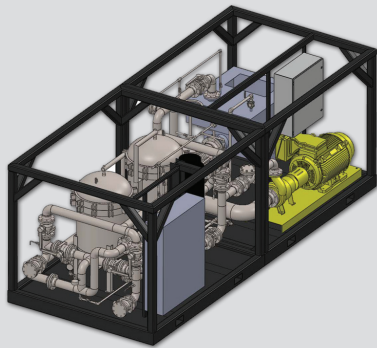
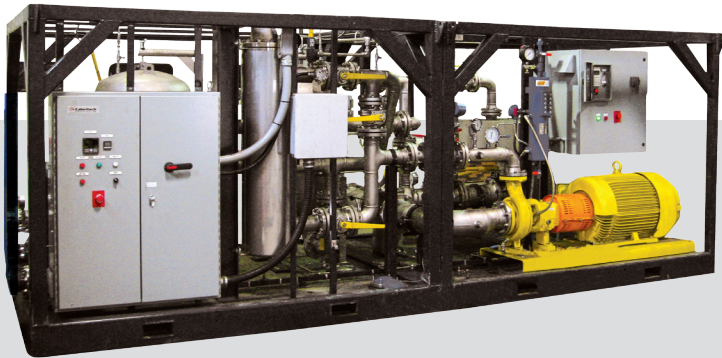


Flushing Skid 4000 (FS-4000)



The FS-4000 is a fully integrated skid-mounted flushing and filtration unit specifically designed for quick set up and operation. The unit can provide controlled flow rates from 500 to 4,000 liters per minute for flushing, chemical cleaning, or filtering operations. This system is ideal for applications where a high degree of cleanliness is required to meet operational or OEM specifications.

Equipment

The FS-4000 comes equipped with a 400,000 BTU per hour electric heating element, a dual seal stainless steel 150 HP pump capable of pressure up to 150 psi, a stainless steel 1 m³ chemical additive tank, and 2 vertical eight-bag filter vessels containing eight 7" x 32" (177.8 mm x 812.8 mm) high-flow bag filter elements able to meet standards as demanding as 1 micron. The FS-4000 is also equipped with fully integrated stainless steel piping between elements, including a reverse flow manifold and easy access connection points for suction and discharge.

Applications

The FS-4000 is suitable for both water and oil base applications, and is ideal for any of the following:

- Lube oil flushing
- Chemical cleaning
- High velocity flushing
- Glycol filtration

Requirements

The FS-4000 is required to either have spill containment or be placed in a berm. Heating and hoarding is required at subzero temperatures. The FS-4000 requires the following power requirements at maximum duty:

Element	Current	Power
Centrifugal Pump	140 amps	115 kW
Heater	145 amps	120 kW
	480V, 60Hz, 3 Phase Power	
	600V, 60Hz, 3 Phase Power	

Capabilities

Flow Capability	500 to 4,000 liters per minute
Discharge Pressure	Up to 150 psi
Filtration Range	1 to 50 micron
Operating Temperature Range	5°C to 95°C (41°F to 203°F)

FS-4000 Footprint

	Length	Width	Height	Weight
Pumping Skid	7' 10" (2.4 m)	7' 10" (2.4 m)	7' 3" (2.2 m)	3,800 kg (8,300 lbs)
Filtration Skid	7' 10" (2.4 m)	7' 10" (2.4 m)	7' 3" (2.2 m)	4,100 kg (9,000 lbs)